

# Medeco B Small Format Interchangeable Core



Medeco B Cores

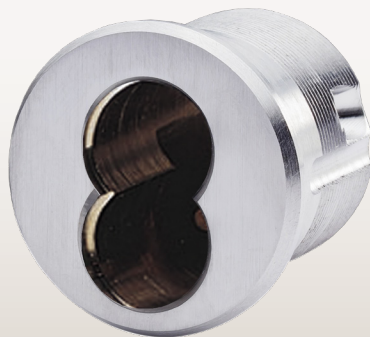


Medeco B Keyblanks

## Technical Information:

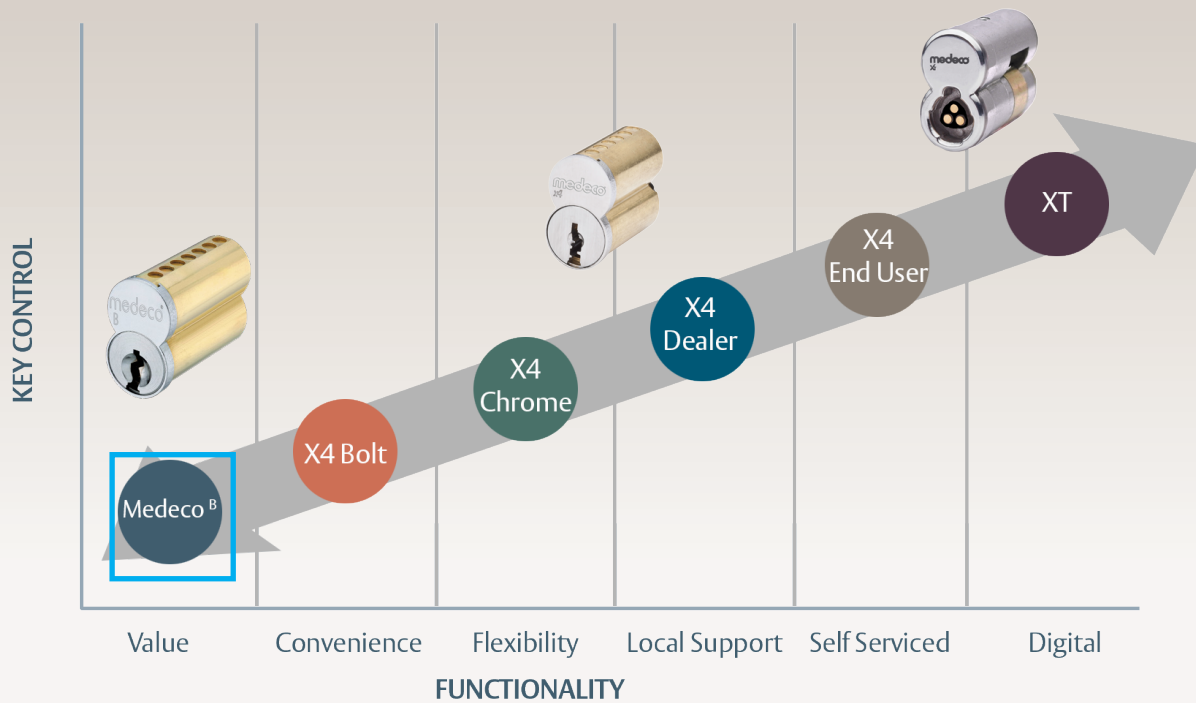
- Solid brass construction
- Reinforced sleeve design
- Medeco branded, plain face available
- 6 & 7 pin unpatented SFIC
- Sleeve, shell, plug and face plate made of brass
- Individually capped pin chambers

## SFIC Housings



## Available Keyways:





## What is Medeco B?

Medeco B is a Small Format Interchangeable Core (SFIC), available in 27 industry standard keyways.

## What finishes are available in Medeco B?

05 Bright Brass, 06 Satin Brass, 09 Antique Brass, 10 Satin Brass Blackened, 11 Bright Bronze, 12 Satin Bronze, 13 Dark Bronze/Oil Rubbed, 18 Bright Nickel, 19 Satin Nickel, 20 Antique Nickel, 22 Flat Black, 24 Dark Bronze/Clear Coat, 25 Bright Chrome and 26 Satin Chrome.

## Who is the ideal End User?

Medeco B is an affordable alternative for end users currently using industry standard unpatented SFIC Keyways.

## How can Medeco B SFIC be ordered?

Medeco B SFIC can be ordered combined (A2) and uncombined.  
Keys are available as blanks, cut change keys or cut control keys.

## Is a contract needed to purchase Medeco B?

Channel partners do not need a contract to purchase Medeco B SFIC Cores.

## What is the Medeco B Core and Key constructed of?

The core's shell, sleeve, plug, and face-plate are made of brass.  
The keys are made of nickel silver.

## What Pin counts are offered?

6 or 7 pin configurations are available.  
Keys are 7 pin length, using tip stop for 6 pin.

## What kind of key machine is required to cut Medeco B Keys?

Keys can be cut on standard SFIC key cutting equipment, such as HPC1200CM, Blue Punch, BEST old-style combinator, BEST new style combinator, ITL and others.

## What stamping is on the cores?

Medeco B comes with Medeco branding on the face, or can be ordered plain.